

Kindergarten Information Night 2025

École Parc Élémentaire

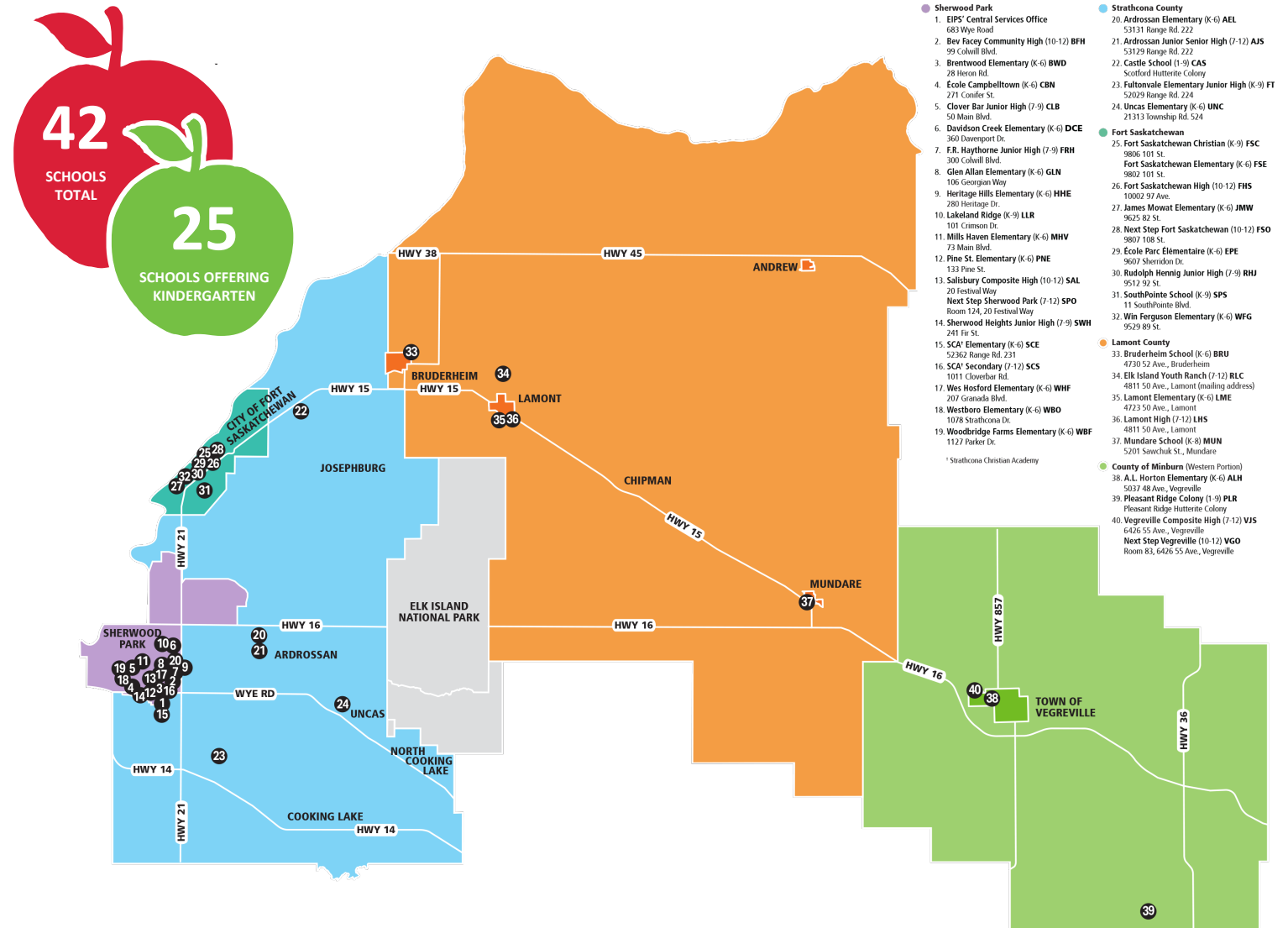




**Welcome to
KINDERGARTEN!**

Elk Island Public Schools (EIPS) serves:

- Sherwood Park
- Fort Saskatchewan
- Strathcona County
- Lamont County
- Western Portion of the County of Minburn





Literacy-rich, play-based programming



Curriculum Areas

- French Immersion Language Arts and Literature
- Mathematics
- Physical Education and Wellness
- Science
- Social Studies
- Fine Arts

New Kindergarten Curriculum

- New kindergarten curriculum implemented:
 - Mathematics (2022-23)
 - English Language Arts and Literature (2022-23)
 - Physical Education and Wellness (2022-23)
 - Science (2023-24)
 - French Immersion Language Arts and Literature (2023-24)
- Future kindergarten curriculum implementation:
 - Social Studies (anticipated 2025-26)
 - Fine Arts (to be determined)

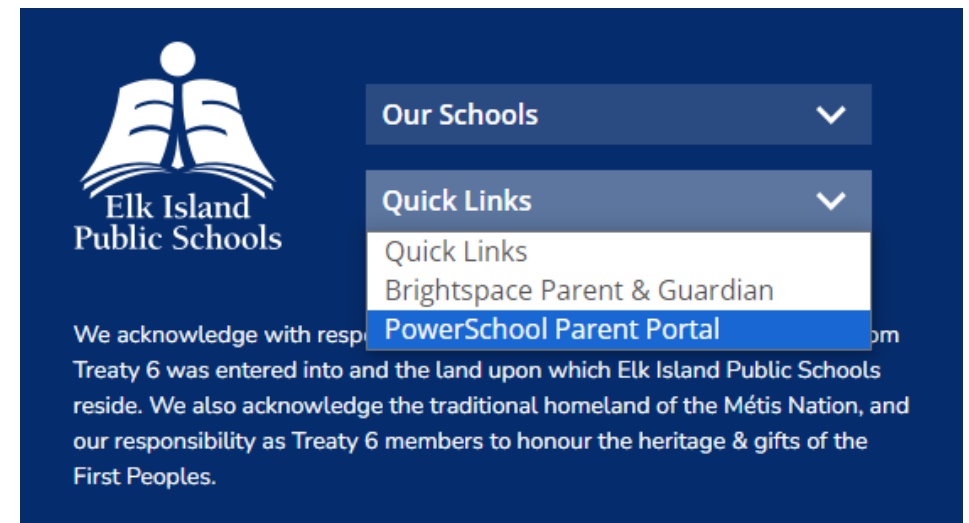
Learn more at
curriculum.learnalberta.ca/curriculum/en



PowerSchool Parent Portal

- Online access to your child's progress report, attendance and school fees
- One Parent Portal account to link all children in the family together
- Your account follows each student as they move through the Division

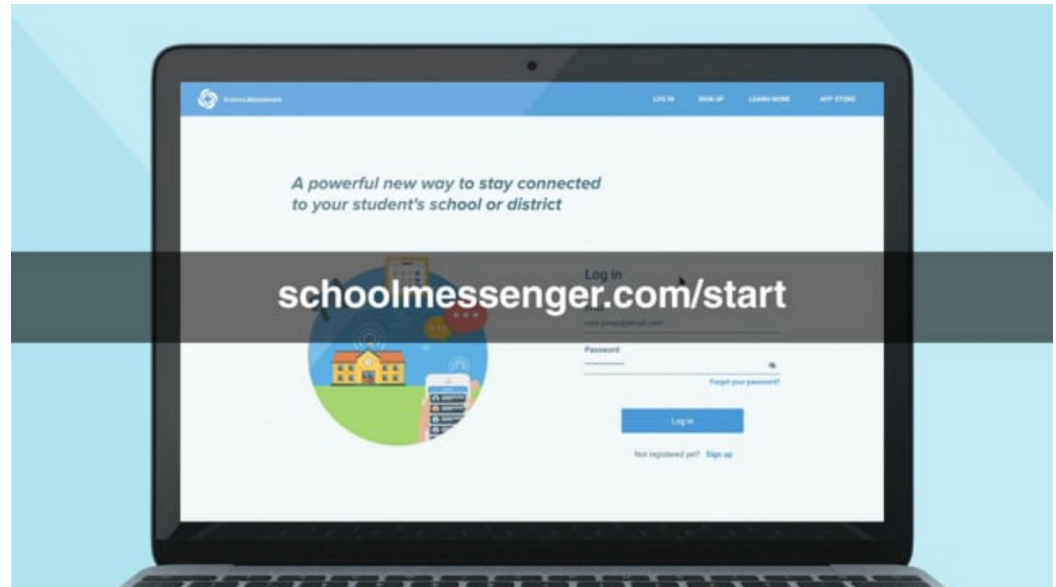
Learn more at eips.ca/parents/powerschool



SchoolMessenger

- EIPS uses the SchoolMessenger system for sending information to families by phone and email—including bus cancellations or delays, inclement weather, upcoming events, school newsletters, parental engagement opportunities, emergency notices and more.
- Families can manage their subscription preference through their SchoolMessenger account.
- Download the app to stay connected on the go.

Learn more at eips.ca/contact/subscribe



Permission Click

- EIPS uses the online Permission Click platform for many school and Division forms.
- Forms are easily accessible and fillable from mobile devices. No log in required.
- Emails will come from Permission Click.
 - Add notifications@permissionclick.com to your safe-sender list to ensure required forms aren't mistakenly directed to your junk mail folder.

Permission **CLICK**



Student Transportation

- Bus routes
- Bus passes
- Transportation fees
- Little Elk Island Adventure
- First day of kindergarten busing: **September 4**

Transportation fees are due June 30, 2024

Fees are paid online at eips.ca/transportation/transportation-fees/student-transportation-online-payments



EIPS KINDERGARTEN CALENDAR 2025-26

SCHEDULE A:
Mondays, Thursdays
and select Wednesdays

SCHEDULE B:
Tuesdays, Fridays
and select Wednesdays

Important Dates

| | |
|----------------|--|
| Aug 26 | Professional Learning Day |
| Aug 27 | Operational Day |
| Aug 28 | First Instructional Day Schedule A |
| Aug 29 | First Instructional Day Schedule B |
| Sept 1 | Labour Day - holiday |
| Sept 4 | First Day of Kindergarten Busing |
| Sept 30 | National Day for Truth and Reconciliation - Division closure |
| Oct 3 | Professional Learning Day |
| Oct 13 | Thanksgiving Day - holiday |
| Nov 10 - 14 | November Break |
| Nov 11 | Remembrance Day - holiday |
| Nov 17 | Classes Resume |
| Dec 22 - Jan 2 | Christmas Break |
| Dec 25 | Christmas Day - holiday |
| Jan 1 | New Year's Day - holiday |
| Jan 5 | Classes Resume |
| Jan 28 | Professional Learning Day |
| Feb 5 - 6 | North Central Teachers' Convention |
| Feb 16 | Family Day - holiday |
| Mar 6 | Professional Learning Day |
| Mar 23 - 27 | Spring Break |
| Mar 30 | Classes Resume |
| Apr 3 | Good Friday - holiday |
| Apr 6 | Easter Monday - Division closure |
| May 1 | Professional Learning Day |
| May 18 | Victoria Day - holiday |
| June 21 | National Indigenous Peoples Day |
| Jun 22 | Last Instructional Day Schedule A |
| Jun 23 | Last Instructional Day Schedule B |
| Jun 24 | Operational Day |

■ No School for All Students and Staff
○ Early Dismissal for Students
- one hour early every Wednesday

☆ First Day of Class
■ No School for Students
- Professional Learning Day/Operational Day

AUGUST 2025

| S | M | T | W | T | F | S |
|----|----|----|----|----|----|----|
| | | | | | 1 | 2 |
| 3 | 4 | 5 | 6 | 7 | 8 | 9 |
| 10 | 11 | 12 | 13 | 14 | 15 | 16 |
| 17 | 18 | 19 | 20 | 21 | 22 | 23 |
| 24 | 25 | 26 | 27 | 28 | 29 | 30 |
| 31 | | | | | | |

SEPTEMBER 2025

| S | M | T | W | T | F | S |
|----|----|----|----|----|----|----|
| | 1 | 2 | 3 | 4 | 5 | 6 |
| 7 | 8 | 9 | 10 | 11 | 12 | 13 |
| 14 | 15 | 16 | 17 | 18 | 19 | 20 |
| 21 | 22 | 23 | 24 | 25 | 26 | 27 |
| 28 | 29 | 30 | | | | |

OCTOBER 2025

| S | M | T | W | T | F | S |
|----|----|----|----|----|----|----|
| | | | 1 | 2 | 3 | 4 |
| 5 | 6 | 7 | 8 | 9 | 10 | 11 |
| 12 | 13 | 14 | 15 | 16 | 17 | 18 |
| 19 | 20 | 21 | 22 | 23 | 24 | 25 |
| 26 | 27 | 28 | 29 | 30 | 31 | |

NOVEMBER 2025

| S | M | T | W | T | F | S |
|----|----|----|----|----|----|----|
| | | | | | | 1 |
| 2 | 3 | 4 | 5 | 6 | 7 | 8 |
| 9 | 10 | 11 | 12 | 13 | 14 | 15 |
| 16 | 17 | 18 | 19 | 20 | 21 | 22 |
| 23 | 24 | 25 | 26 | 27 | 28 | 29 |
| 30 | | | | | | |

DECEMBER 2025

| S | M | T | W | T | F | S |
|----|----|----|----|----|----|----|
| | 1 | 2 | 3 | 4 | 5 | 6 |
| 7 | 8 | 9 | 10 | 11 | 12 | 13 |
| 14 | 15 | 16 | 17 | 18 | 19 | 20 |
| 21 | 22 | 23 | 24 | 25 | 26 | 27 |
| 28 | 29 | 30 | 31 | | | |

JANUARY 2026

| S | M | T | W | T | F | S |
|----|----|----|----|----|----|----|
| | | | | | | 1 |
| 2 | 3 | 4 | 5 | 6 | 7 | 8 |
| 9 | 10 | 11 | 12 | 13 | 14 | 15 |
| 16 | 17 | 18 | 19 | 20 | 21 | 22 |
| 23 | 24 | 25 | 26 | 27 | 28 | 29 |
| 30 | 31 | | | | | |

FEBRUARY 2026

| S | M | T | W | T | F | S |
|----|----|----|----|----|----|----|
| 1 | 2 | 3 | 4 | 5 | 6 | 7 |
| 8 | 9 | 10 | 11 | 12 | 13 | 14 |
| 15 | 16 | 17 | 18 | 19 | 20 | 21 |
| 22 | 23 | 24 | 25 | 26 | 27 | 28 |

MARCH 2026

| S | M | T | W | T | F | S |
|----|----|----|----|----|----|----|
| 1 | 2 | 3 | 4 | 5 | 6 | 7 |
| 8 | 9 | 10 | 11 | 12 | 13 | 14 |
| 15 | 16 | 17 | 18 | 19 | 20 | 21 |
| 22 | 23 | 24 | 25 | 26 | 27 | 28 |
| 29 | 30 | 31 | | | | |

APRIL 2026

| S | M | T | W | T | F | S |
|----|----|----|----|----|----|----|
| | | | 1 | 2 | 3 | 4 |
| 5 | 6 | 7 | 8 | 9 | 10 | 11 |
| 12 | 13 | 14 | 15 | 16 | 17 | 18 |
| 19 | 20 | 21 | 22 | 23 | 24 | 25 |
| 26 | 27 | 28 | 29 | 30 | | |

MAY 2026

| S | M | T | W | T | F | S |
|----|----|----|----|----|----|----|
| | | | | | 1 | 2 |
| 3 | 4 | 5 | 6 | 7 | 8 | 9 |
| 10 | 11 | 12 | 13 | 14 | 15 | 16 |
| 17 | 18 | 19 | 20 | 21 | 22 | 23 |
| 24 | 25 | 26 | 27 | 28 | 29 | 30 |
| 31 | | | | | | |

JUNE 2026

| S | M | T | W | T | F | S |
|----|----|----|----|----|----|----|
| | 1 | 2 | 3 | 4 | 5 | 6 |
| 7 | 8 | 9 | 10 | 11 | 12 | 13 |
| 14 | 15 | 16 | 17 | 18 | 19 | 20 |
| 21 | 22 | 23 | 24 | 25 | 26 | 27 |
| 28 | 29 | 30 | | | | |

JULY 2026

| S | M | T | W | T | F | S |
|----|----|----|----|----|----|----|
| | | | 1 | 2 | 3 | 4 |
| 5 | 6 | 7 | 8 | 9 | 10 | 11 |
| 12 | 13 | 14 | 15 | 16 | 17 | 18 |
| 19 | 20 | 21 | 22 | 23 | 24 | 25 |
| 26 | 27 | 28 | 29 | 30 | 31 | |

EIPS offers full-day programming on alternating days.

475
instructional
hours
per year

- Mondays, Thursdays and **select** Wednesdays, or
- Tuesdays, Fridays and **select** Wednesdays
- Students are dismissed one hour earlier **every** Wednesday

Find the Division calendar at eips.ca/calendar

Visit the calendar page on the school's website for school specific dates and events

Everyday ECS

Your students will follow the division calendar.



EIPS DIVISION CALENDAR 2025-26

Regular School Day

No School for All Students and Staff

Early Dismissal for Students
– one hour early every Wednesday

First Instructional Day – semesters 1 & 2

No School for Students
– Professional Learning Day/Operational Day

Important Dates

| | |
|-----------------------|--|
| Aug 26 | Professional Learning Day |
| Aug 27 | Operational Day |
| Aug 28 | Classes Begin |
| Sept 1 | Labour Day – holiday |
| Sept 30 | National Day for Truth and Reconciliation – Division closure |
| Oct 3 | Professional Learning Day |
| Oct 13 | Thanksgiving Day – holiday |
| Nov 10 - 14 | November Break |
| Nov 11 | Remembrance Day – holiday |
| Nov 17 | Classes Resume |
| Dec 22 - Jan 2 | Christmas Break |
| Dec 25 | Christmas Day – holiday |
| Jan 1 | New Year's Day – holiday |
| Jan 5 | Classes Resume |
| Jan 28 | Professional Learning Day |
| Jan 29 | Second Semester Begins |
| Feb 5 - 6 | North Central Teachers' Convention |
| Feb 16 | Family Day – holiday |
| Mar 6 | Professional Learning Day |
| Mar 23 - 27 | Spring Break |
| Mar 30 | Classes Resume |
| Apr 3 | Good Friday – holiday |
| Apr 6 | Easter Monday – Division closure |
| May 1 | Professional Learning Day |
| May 18 | Victoria Day – holiday |
| June 21 | National Indigenous Peoples Day |
| Jun 23 | Last Instructional Day |
| Jun 24 | Operational Day |

AUGUST 2025

| S | M | T | W | T | F | S |
|----|----|----|----|----|----|----|
| | | | | | 1 | 2 |
| 3 | 4 | 5 | 6 | 7 | 8 | 9 |
| 10 | 11 | 12 | 13 | 14 | 15 | 16 |
| 17 | 18 | 19 | 20 | 21 | 22 | 23 |
| 24 | 25 | 26 | 27 | 28 | 29 | 30 |
| 31 | | | | | | |

OCTOBER 2025

| S | M | T | W | T | F | S |
|----|----|----|----|----|----|----|
| | | | 1 | 2 | 3 | 4 |
| 5 | 6 | 7 | 8 | 9 | 10 | 11 |
| 12 | 13 | 14 | 15 | 16 | 17 | 18 |
| 19 | 20 | 21 | 22 | 23 | 24 | 25 |
| 26 | 27 | 28 | 29 | 30 | 31 | |

DECEMBER 2025

| S | M | T | W | T | F | S |
|----|----|----|----|----|----|----|
| | 1 | 2 | 3 | 4 | 5 | 6 |
| 7 | 8 | 9 | 10 | 11 | 12 | 13 |
| 14 | 15 | 16 | 17 | 18 | 19 | 20 |
| 21 | 22 | 23 | 24 | 25 | 26 | 27 |
| 28 | 29 | 30 | 31 | | | |

FEBRUARY 2026

| S | M | T | W | T | F | S |
|----|----|----|----|----|----|----|
| 1 | 2 | 3 | 4 | 5 | 6 | 7 |
| 8 | 9 | 10 | 11 | 12 | 13 | 14 |
| 15 | 16 | 17 | 18 | 19 | 20 | 21 |
| 22 | 23 | 24 | 25 | 26 | 27 | 28 |

APRIL 2026

| S | M | T | W | T | F | S |
|----|----|----|----|----|----|----|
| | | | 1 | 2 | 3 | 4 |
| 5 | 6 | 7 | 8 | 9 | 10 | 11 |
| 12 | 13 | 14 | 15 | 16 | 17 | 18 |
| 19 | 20 | 21 | 22 | 23 | 24 | 25 |
| 26 | 27 | 28 | 29 | 30 | | |

JUNE 2026

| S | M | T | W | T | F | S |
|----|----|----|----|----|----|----|
| | 1 | 2 | 3 | 4 | 5 | 6 |
| 7 | 8 | 9 | 10 | 11 | 12 | 13 |
| 14 | 15 | 16 | 17 | 18 | 19 | 20 |
| 21 | 22 | 23 | 24 | 25 | 26 | 27 |
| 28 | 29 | 30 | | | | |

SEPTEMBER 2025

| S | M | T | W | T | F | S |
|----|----|----|----|----|----|----|
| | 1 | 2 | 3 | 4 | 5 | 6 |
| 7 | 8 | 9 | 10 | 11 | 12 | 13 |
| 14 | 15 | 16 | 17 | 18 | 19 | 20 |
| 21 | 22 | 23 | 24 | 25 | 26 | 27 |
| 28 | 29 | 30 | | | | |

NOVEMBER 2025

| S | M | T | W | T | F | S |
|----|----|----|----|----|----|----|
| | | | | | | 1 |
| 2 | 3 | 4 | 5 | 6 | 7 | 8 |
| 9 | 10 | 11 | 12 | 13 | 14 | 15 |
| 16 | 17 | 18 | 19 | 20 | 21 | 22 |
| 23 | 24 | 25 | 26 | 27 | 28 | 29 |
| 30 | | | | | | |

JANUARY 2026

| S | M | T | W | T | F | S |
|----|----|----|----|----|----|----|
| | | | | 1 | 2 | 3 |
| 4 | 5 | 6 | 7 | 8 | 9 | 10 |
| 11 | 12 | 13 | 14 | 15 | 16 | 17 |
| 18 | 19 | 20 | 21 | 22 | 23 | 24 |
| 25 | 26 | 27 | 28 | 29 | 30 | 31 |

MARCH 2026

| S | M | T | W | T | F | S |
|----|----|----|----|----|----|----|
| 1 | 2 | 3 | 4 | 5 | 6 | 7 |
| 8 | 9 | 10 | 11 | 12 | 13 | 14 |
| 15 | 16 | 17 | 18 | 19 | 20 | 21 |
| 22 | 23 | 24 | 25 | 26 | 27 | 28 |
| 29 | 30 | 31 | | | | |

MAY 2026

| S | M | T | W | T | F | S |
|----|----|----|----|----|----|----|
| | | | | | 1 | 2 |
| 3 | 4 | 5 | 6 | 7 | 8 | 9 |
| 10 | 11 | 12 | 13 | 14 | 15 | 16 |
| 17 | 18 | 19 | 20 | 21 | 22 | 23 |
| 24 | 25 | 26 | 27 | 28 | 29 | 30 |
| 31 | | | | | | |

JULY 2026

| S | M | T | W | T | F | S |
|----|----|----|----|----|----|----|
| | | | 1 | 2 | 3 | 4 |
| 5 | 6 | 7 | 8 | 9 | 10 | 11 |
| 12 | 13 | 14 | 15 | 16 | 17 | 18 |
| 19 | 20 | 21 | 22 | 23 | 24 | 25 |
| 26 | 27 | 28 | 29 | 30 | 31 | |

Staggered Entry

- To introduce new kindergarteners to school, École Parc offers staggered entry at the start of the school year.
- Children come in smaller groups for part days to learn a bit about the classroom, the school and daily routines.
- 2024-25 staggered entry dates:
 - August 28, 29 and September 2, 3.
 - We will notify families towards the end of June as to what day your son/daughter are supposed to attend.
- First day of Kindergarten busing: September 4, 2024



French Immersion Program



Our Kindergarten Day

- Bell schedule
 - Start time 8:25 a.m.
 - Lunch time 12:00 am to 1:00 p.m.
 - End of day 3:12 p.m.
- Early dismissal days
 - Start time 8:25 a.m.
 - Lunch time 11:24 a.m. to 12:24 p.m.
 - End of day 2:12 p.m.
- Parent drop off and pick up – at main entrance of the school



Typical Kindergarten Day

- ✓ Circle time/Opening activities
- ✓ Large group activity
- ✓ Centre time/Stations (Numeracy and Literacy skills)
- ✓ Clean up
- ✓ Large group snack time
- ✓ Read aloud/Book sharing
- ✓ Group activities
- ✓ Movement
- ✓ Dismissal



Also in Kindergarten we...

- ✓ do daily physical activity (approximately 30 mins)
- ✓ visit the Library/Bibliothèque for weekly book exchanges
- ✓ use iPads during centre time
- ✓ experience field trips and in-class presentations
- ✓ music class





School Supplies

- <https://www.ecoleparc.ca/about/school-supplies>



**Tools for
School**

Tools for School is a program from the United Way that provides backpacks filled with school supplies to students in kindergarten to Grade 12 whose families have limited resources. The supplies provided may not be everything that's on your child's supply list, but it's a start.

If you would benefit from the Tools for School program, contact the school office.

Events and Field Trips

- We have a \$45.00 field trip fee for our Gr. A/B Kindergarten students.
- Everyday ECS the fees are building into the Alternate program fee.
- Kindergarten teachers will communicate field trip information throughout the school year.

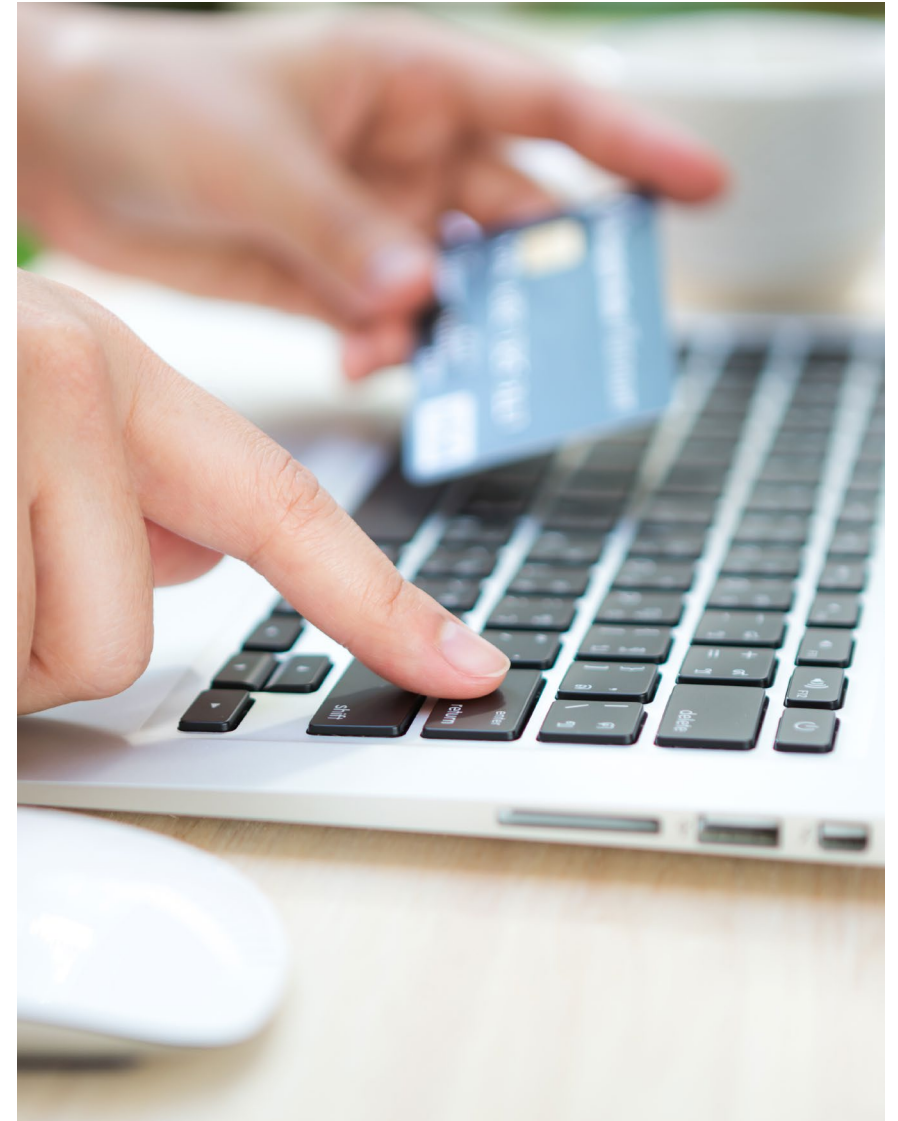
School Fees

- Paid online through the PowerSchool Parent Portal
- Assessed at the start of the year
- Others may be added throughout the year
- Fee waiver policy

Learn more at:

eips.ca/schools/fees

eips.ca/schools/fees/waiver-of-fees





Parent Involvement

- School Council and Fundraising Society
 - Participating with the Council
 - Spirit Wear
 - Hot Lunch
- Parent volunteers

Speech-Language Pathology (SLP) Services

- SLPs in kindergarten provide the following services, as needed:
 - Informal classroom-based speech and language screening
 - Speech and language assessment to identify need for further services
 - Follow up intervention or consultation for children transitioning from preschool programs
 - Direct intervention and consultation based on identified needs
 - Parent consultation



Occupational Therapy (OT) Services

- OTs informally screen students' participation in the classroom setting and provide universal strategies to the classroom staff.
- Service is primarily consultative, providing resources to classroom staff and parents when needed. Students with mild to moderate needs will be primarily served through these general classroom suggestions.
- OTs may have more direct involvement with children who have significant needs in the areas of self-care, regulation and motor skills.



Specialized Supports Informed Consent

School and Program Preference

Enrolling Grade required i

Kindergarten



Review Kindergarten Specialized Supports Informed Consent

☐ I have read and understand the Kindergarten Specialized Supports Informed Consent. required

Please choose from the two options below regarding Kindergarten supports screening for your child. required

☐ Accept Screening

☐ Decline Screening

Refer to the [Kindergarten Calendar](#) information for the 2024-2025 schedule options, then return to this form and select your kindergarten schedule preference. The selected preference is taken into account but is not guaranteed.



Preparing for Kindergarten



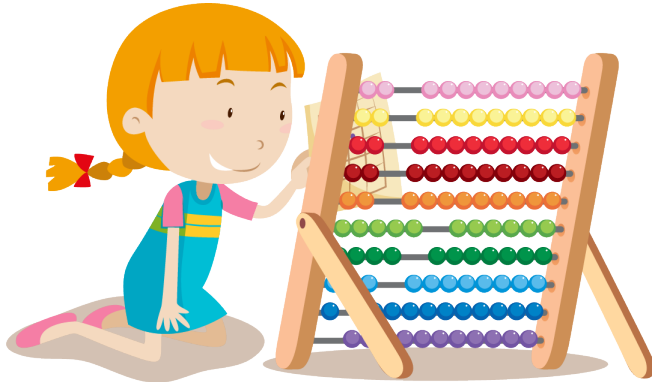
Communication and literacy



Motor skills



Social-emotional development



Numeracy



Self-help skills



Eye See, Eye Learn

Learn more at eips.ca/programs-services/early-learning/kindergarten/preparing-for-kindergarten



Preparing for Kindergarten Series

- EIPS, together with local partners, is planning some opportunities for kindergarten families to help prepare for the year ahead.
- Watch for more information about these opportunities coming to you email inboxes in May.
- Follow us [@eipsearlylearning](https://www.instagram.com/eipsearlylearning) on Instagram to check out resources and what's happening in EIPS Early Learning!



Helpful Links

- eips.ca/kindergarten
- Facebook:
facebook.com/ElkIslandPublicSchools
- Twitter: twitter.com/eips
- ecoleparc.ca
- Alberta Education curriculum:
curriculum.learnalberta.ca/curriculum/en

How can you help us to prepare for your student to join us? We have a survey that we will send tomorrow.

The ABC's of Kindergarten 2025/26



Interested in Grizzly Gear?



We use Munch-A-Lunch to order things like hot lunch, Grizzly Gear, etc. Here is how to create an account:

<https://munchalunch.com/schools/parc>

ÉCOLE PARC APPAREL 2025

\$25.00

GILDAN® ULTRA COTTON® T-SHIRT
ADULT: 2000 YOUTH: 2000B
COLOURS: Black, Irish Green, Cherry Red, Heliconia, Gold, Orange, Carolina Blue, Purple
SIZES: Adult: S - 3XL, Youth: XS - XL

\$45.00

GILDAN® HOODED SWEATSHIRT
ADULT: 18500, YOUTH: 18500B
COLOURS: Black, Irish Green, Cherry Red, Heliconia, Gold, Orange, Carolina Blue, Purple
SIZES: Adult: S - 3XL, Youth: XS - XL

\$50.00

C™ FULL ZIP HOODED SWEATSHIRT A
ADULT: ATCF2600, YOUTH: ATCY2600
COLOURS: Athletic Heather, Black, Dark Heather Grey, Navy, Red, Royal
SIZES: Adult: S - 4XL, Youth: S - XL

\$35.00

GILDAN HEAVY BLEND YOUTH SWEATPANTS
COLOURS: Navy, Sport Grey and Black
SIZES: S-XL

\$30.00

RICHARDSON® SNAPBACK TRUCKER
T2
COLOURS: Black/White, Heather Grey/Dark Green
SIZES: One Size - Adjustable Snapback

\$25.00

YOUTH PERFORMANCE SHORTS
TT115HY
COLOURS: Navy, Sport Grey and Black
SIZES: S-XL



Questions?

Click [here](#) for the ABC's of Kindergarten.

